



GAUTENG EQUESTRIAN FEDERATION

www.gautengequestrianfederation.co.za

Gauteng Equestrian Federation (GEF) Q&A Session Feedback

Firstly thank you to our hosts Equidome for making their facilities available to us all and once again Wessel Straus made himself available after hours.

Although the room was hardly packed to capacity, equestrian was well represented with riders, officials and committee members from both discipline and SAEF structures in attendance, bringing their input from a wide array of disciplines.

Healthy and informative discussion encompassing equestrian as a whole led to unanimous agreement;

1. Equestrian is overburdened with excessive costs in no small way driven by duplication
2. Structured equestrian sport is in imminent danger of collapse if structural road blocks are not addressed as a matter of urgency
3. Roles and responsibilities across our structures require detailed analysis. Roles must be positioned within the relevant structures and not duplicated across a plethora of bodies.
4. Access to our sport is at best cumbersome with a single point of entry being favored by all
5. Entry level costs are prohibitive
6. "Graded" or mid to high level sport is well catered for and appears well supported within our province however entry level multi discipline activity is problematic resulting in difficulties keeping and attracting new, entry level members
7. There is a significant community of equestrians beyond the reach of our structures who's needs we do not address. Their inclusion would significantly redress the cost burden carried by existing members
8. Largely little to no SAEF value is perceived within the community. Higher level athletes are more understanding of the value add of SAEF as a body.
9. It was recognized that all our structures are legitimate and as established are critical to the maintenance and development of equestrian sport within RSA. The challenge is to make then efficient and effective.
10. A new funding model is urgently required for equestrian with open and frank discussions on cost elimination across our community as we cannot continually dip our hands into member's pockets to fund our inefficiencies.

President :	Matthew Smith	Athletes Representative:	Shaneen Krzyza
Vice President :	Jan Kleynhans	Discipline Association Representatives:	Moira Ferreira
Treasurer :	Jan Joubert		Liza Du Bruyn
Secretary :	Cindy Radomsky	District Representatives:	Peter Muller
Coach :	Georgina Roberts		Marion Clough
Legal :	Adv. Johann Raubenheimer		



GAUTENG EQUESTRIAN FEDERATION

GAUTENG EQUESTRIAN FEDERATION

www.gautengequestrianfederation.co.za

The meeting concluded with unanimous agreement to;

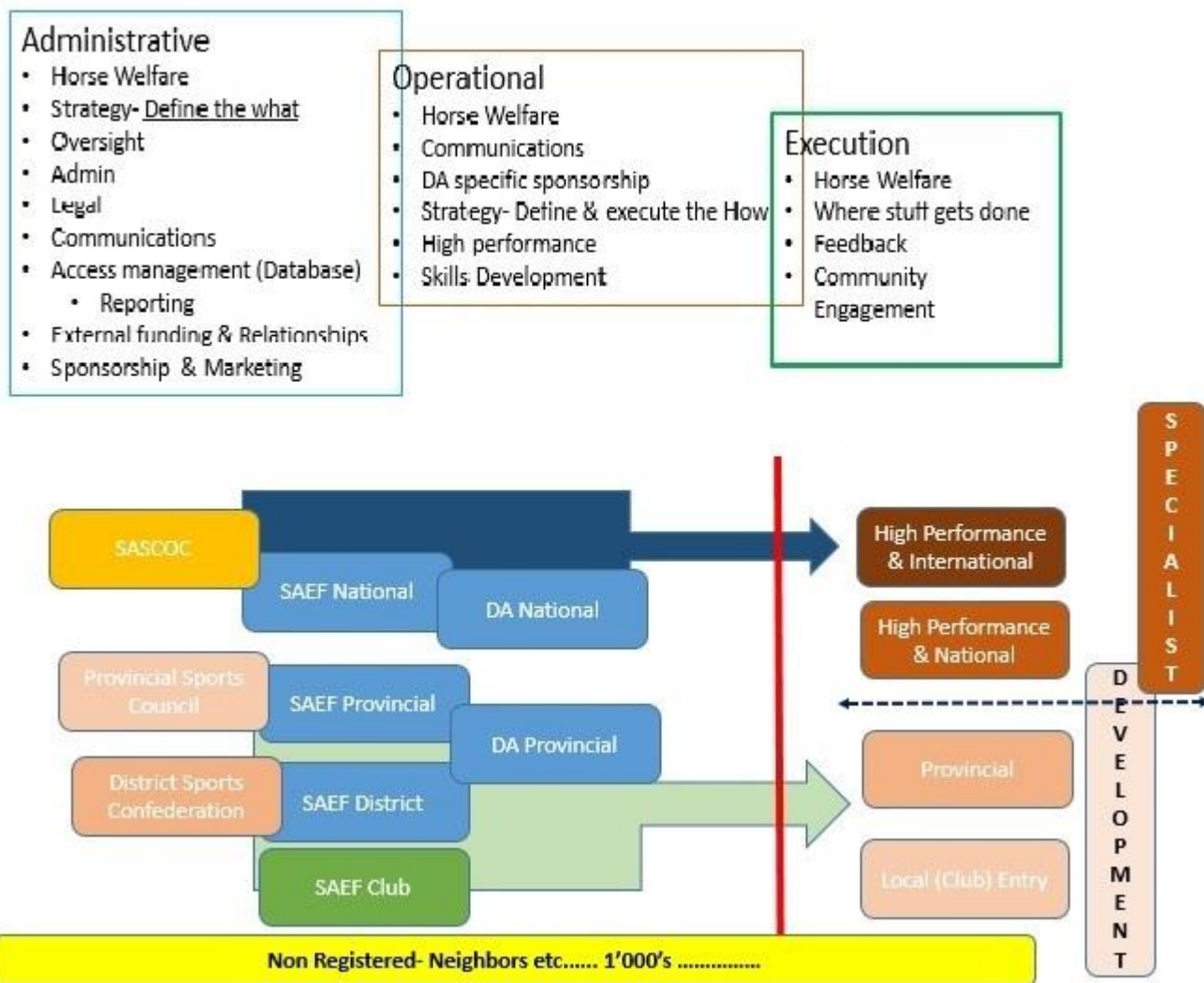
The creation of a working group to develop a model for a low cost point of entry common portal and associated products targeting existing “club” level participants and attractive to equestrians currently out of the structured equestrian sport, operating below the “Specialist” level . This is to be put to GEF council for ratification at the next council meeting.

President :	Matthew Smith	Athletes Representative:	Shaneen Krzyza
Vice President :	Jan Kleynhans	Discipline Association Representatives:	Moira Ferreira
Treasurer :	Jan Joubert		Liza Du Bruyn
Secretary :	Cindy Radomsky	District Representatives:	Peter Muller
Coach :	Georgina Roberts		Marion Clough
Legal :	Adv. Johann Raubenheimer		

GAUTENG EQUESTRIAN FEDERATION

www.gautengequestrianfederation.co.za

11. Equestrian sport should look like the organogram with roles strategically positioned within the relevant vertical.



President :	Matthew Smith	Athletes Representative:	Shaneen Krzyza
Vice President :	Jan Kleynhans	Discipline Association Representatives:	Moira Ferreira
Treasurer :	Jan Joubert		Liza Du Bruyn
Secretary :	Cindy Radomsky	District Representatives:	Peter Muller
Coach :	Georgina Roberts		Marion Clough
Legal :	Adv. Johann Raubenheimer		



GAUTENG EQUESTRIAN FEDERATION

GAUTENG EQUESTRIAN FEDERATION

www.gautengequestrianfederation.co.za

President :	Matthew Smith	Athletes Representative:	Shaneen Krzyza
Vice President :	Jan Kleynhans	Discipline Association Representatives:	Moira Ferreira
Treasurer :	Jan Joubert		Liza Du Bruyn
Secretary :	Cindy Radomsky	District Representatives:	Peter Muller
Coach :	Georgina Roberts		Marion Clough
Legal :	Adv. Johann Raubenheimer		